

Simple concentration monitoring system.
Never miss a concentration change
with real-time readings!

Pan
REFRACTOMETER

Digital Immersion Refractometer

PAN-1

Cat. No.3596

■ Applications

- Metal-working fluids
- Water-based cleaning fluids
- Food

**Automatic
continuous
measurement!**

Once START is pressed,
the unit continues to
take measurements
every 30 seconds.

**Rugged construction
for reliable long-term
performance!**

The immersed part is
made of SUS 316
stainless-steel.



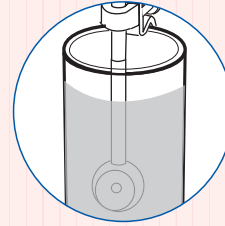
**Simply clip the
unit on to the side of
a container or pot!**

No special equipment
is needed for the
set-up.

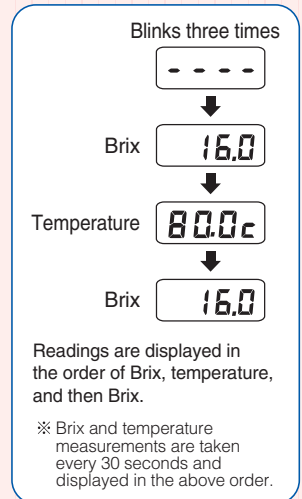
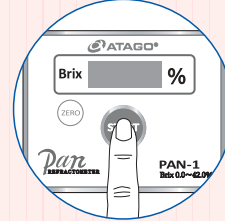
 **ATAGO®**

Measurement Method

- Submerge the prism in the liquid.
- Press the START key.
- Measurements are taken every 30 seconds.



- Press the START key.



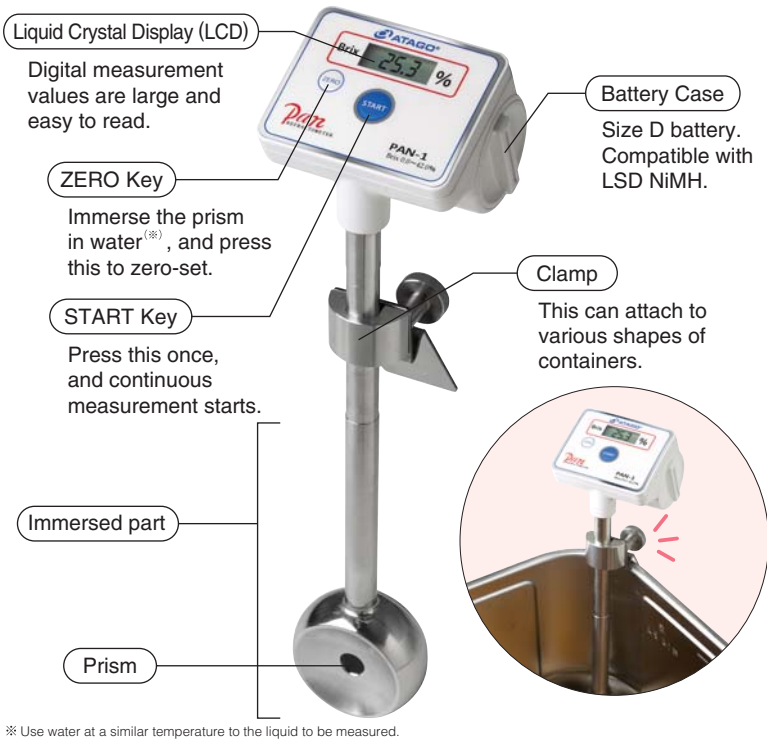
Displayed Value

This instrument measures the refractive index of a liquid and displays the converted value in "Brix," which is a percentage measurement of sugar in water. The concentration of a substance other than sugar can be calculated by creating a conversion table of the desired concentration % and corresponding Brix %. Contact ATAGO for further details.

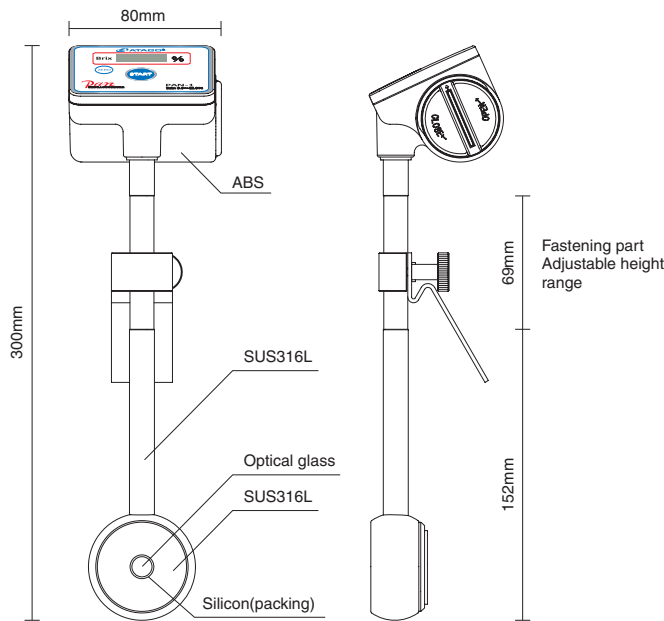
Specifications

PAN-1		Cat. No.3596
Measurement range	Brix 0.0 to 42.0% Temperature 10.0 to 99.9°C	
Resolution	Brix 0.1% Temperature 0.1°C	
Measurement accuracy	Brix ±0.2% Temperature ±0.5°C	
Measurement temperature	10 to 95°C	
International Protection class	Immersed part	IP67
	Display	IP65
Dimensions and weight	80(W)×300(L)×72(H)mm 610g (main unit only)	
Battery life	2 months(when an alkaline battery is used)	
Power supply	Size D alkaline battery × 1 Compatible with LSD NiMH.	
Ambient temperature	10 to 45°C	
Accessories	① Size D battery ② Instruction manual	

Names and Functions of Components



Dimensions



All ATAGO refractometers are designed and manufactured in Japan.

HACCP GMP GLP ATAGO products comply with HACCP, GMP, and GLP system standards.

ATAGO CO.,LTD.

Headquarters: The Front Tower Shiba Koen, 23rd Floor
 2-6-3 Shiba-koen, Minato-ku, Tokyo 105-0011, Japan
 TEL : 81-3-3431-1943 FAX : 81-3-3431-1945
 overseas@atago.net http://www.atago.net/

ATAGO U.S.A., Inc.

TEL : 1-425-637-2107 customerservice@atago-usa.com

ATAGO INDIA Instruments Pvt. Ltd.

TEL : 91-22-2833-8038 / 8076 customerservice@atago-india.com

ATAGO (THAILAND) Co., Ltd.

TEL : 662-982-8718-9 customerservice@atago-thailand.com

ATAGO BRASIL Ltda.

TEL : 55 16 3916-6000 customerservice@atago-brasil.com

ATAGO ITALIA s.r.l.

TEL : 39 2 36557267 customerservice@atago-italia.com

ATAGO CHINA Guangzhou Co., Ltd.

TEL : 86 20-38106065 info@atago-china.com



* Specifications and appearance are subject to change without notice.



food | dairy | grain | feed

PH: 03 595 2368 | WWW.FFI.NZ